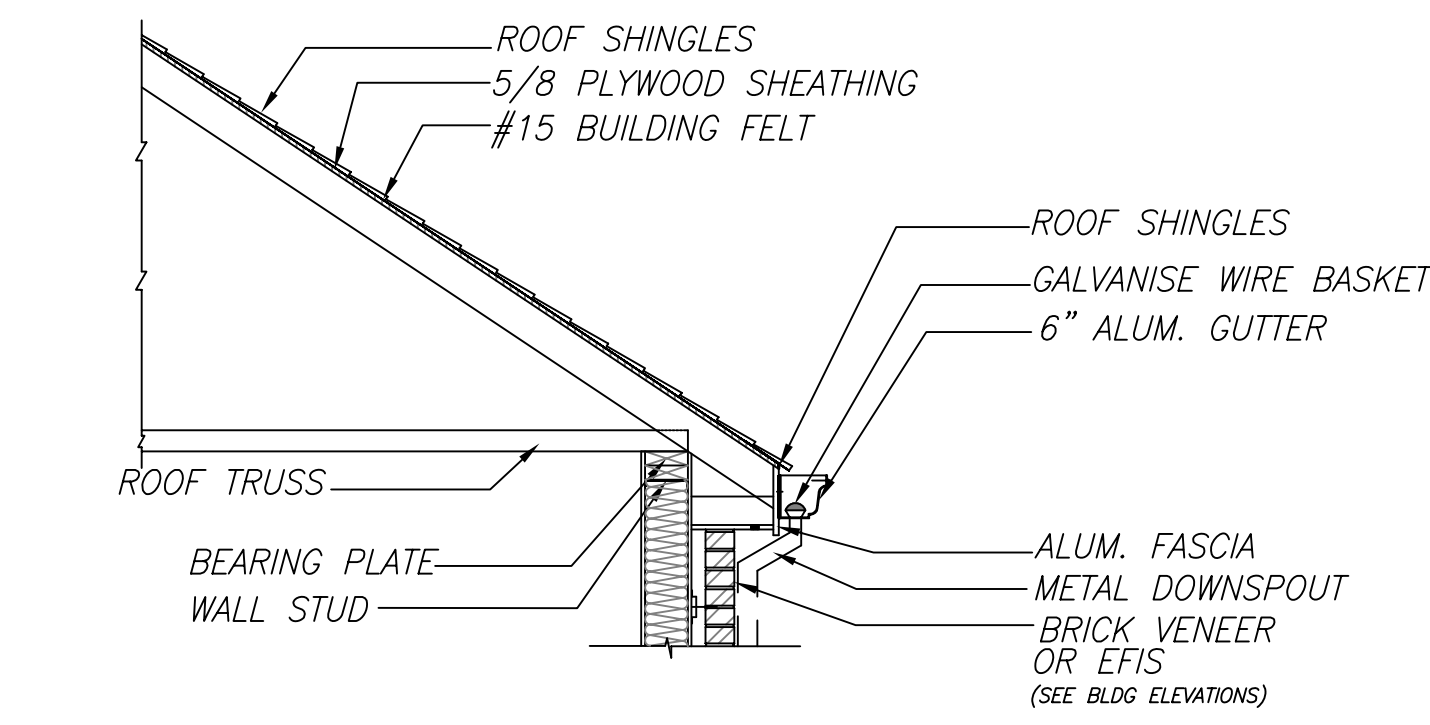
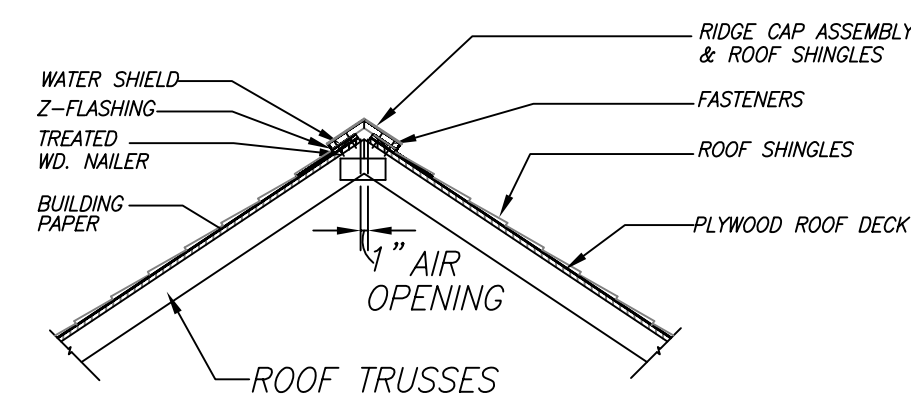


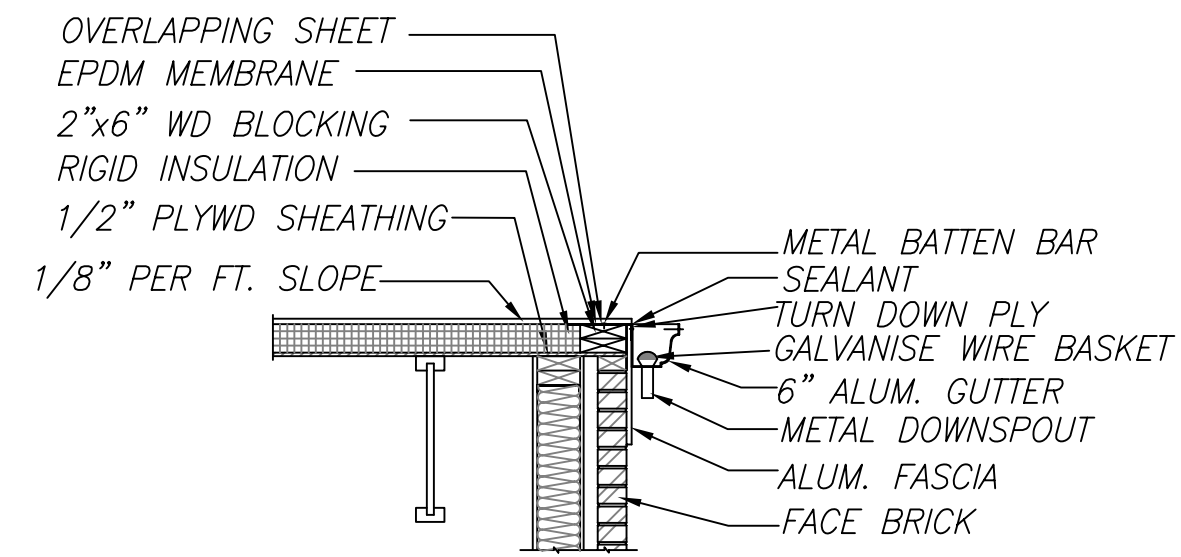
ROOF DETAILS
SCALE: 1 1/2"=1'-0"



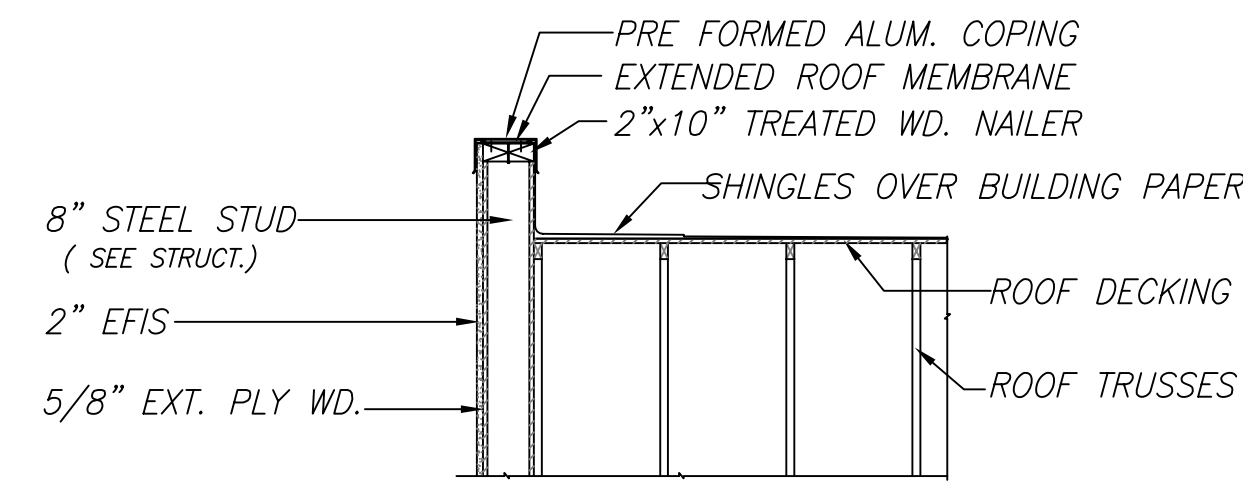
ROOF DETAIL 1
SCALE: 1 1/2"=1'-0" A-11



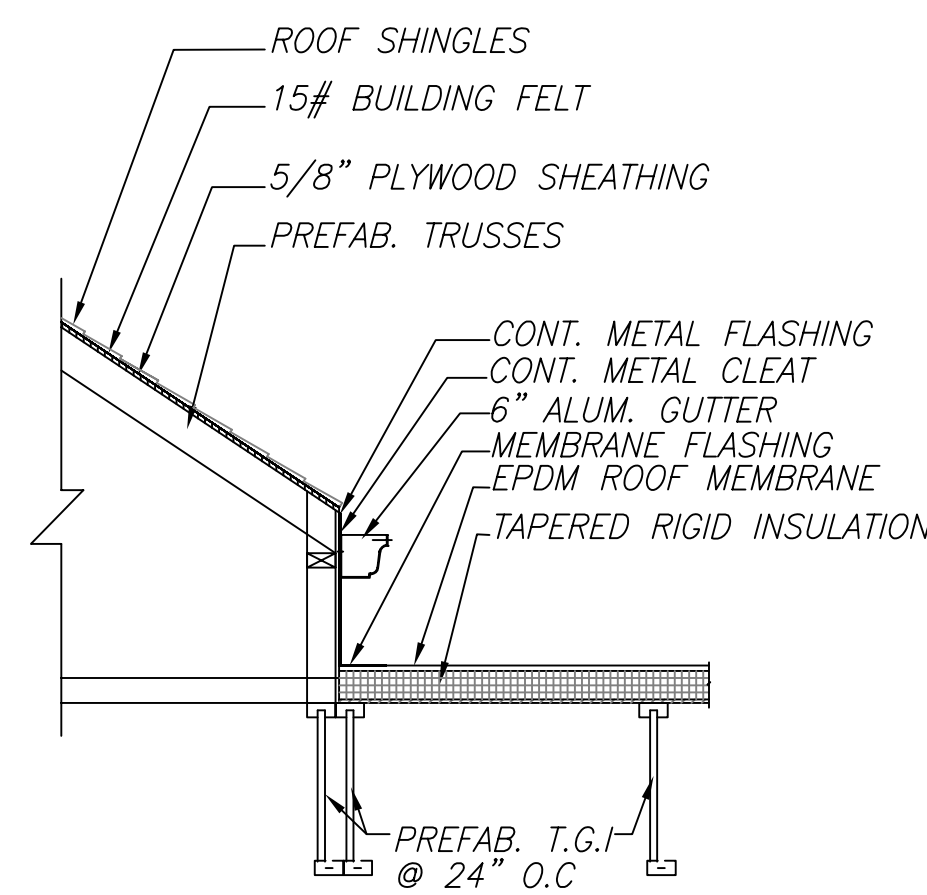
ROOF DETAIL 4
SCALE: 1 1/2"=1'-0" A-3



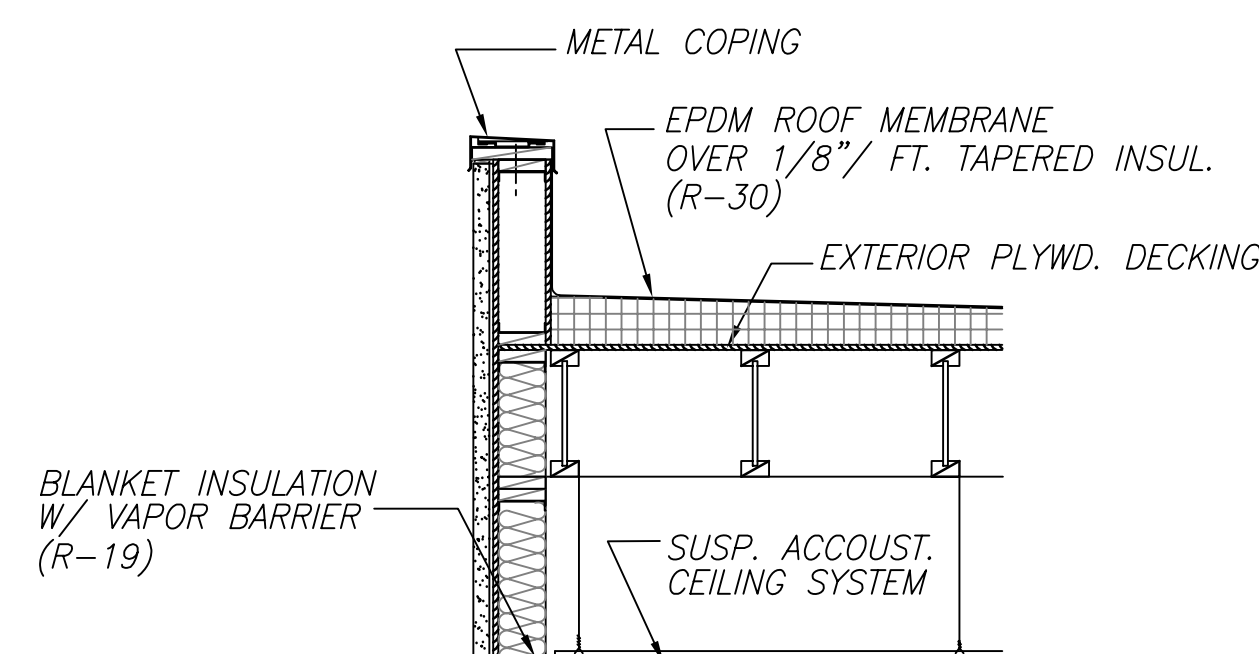
ROOF DETAIL 2
SCALE: 1 1/2"=1'-0" A-3



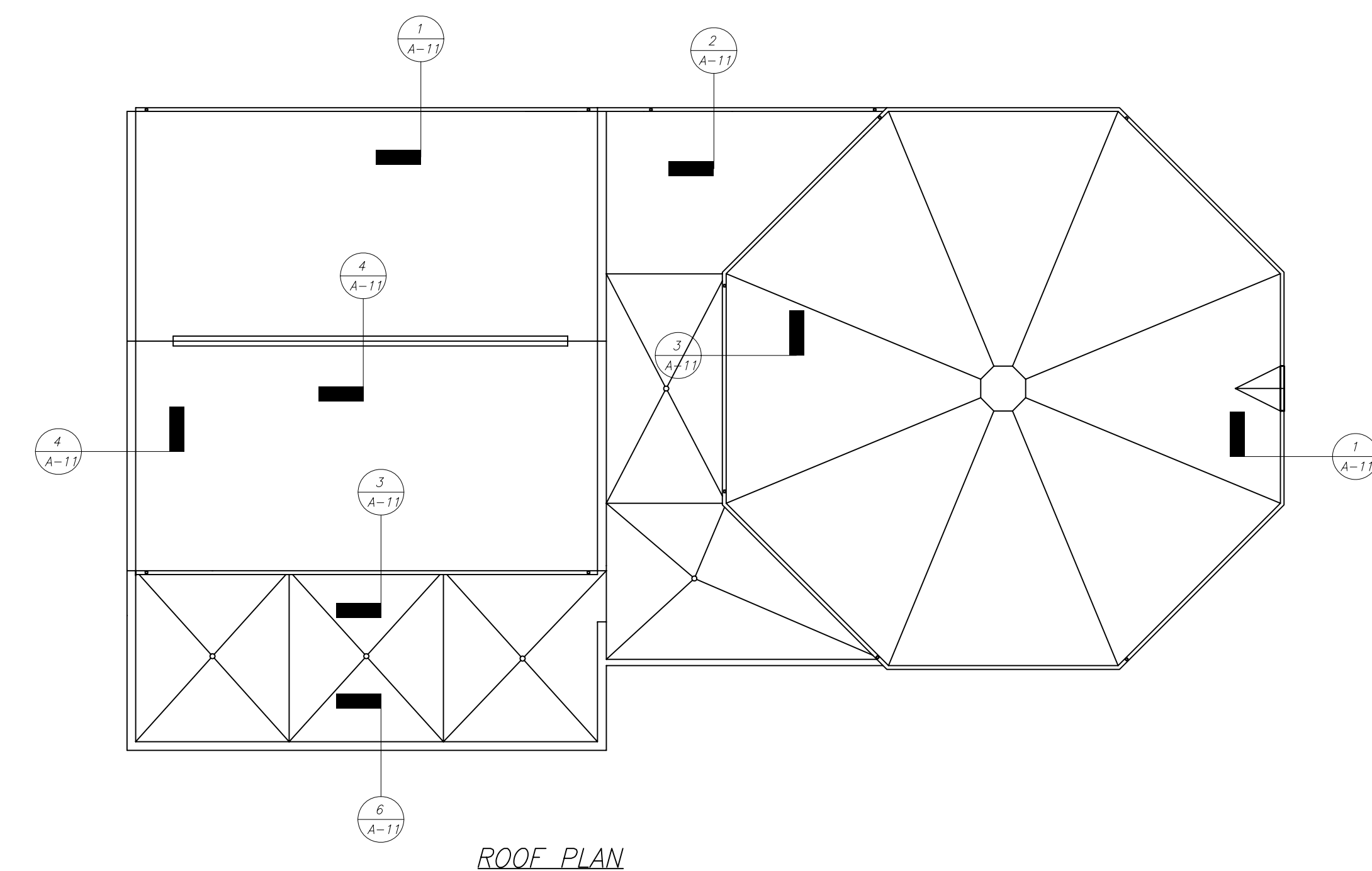
COPING DETAIL 5
SCALE: 1 1/2"=1'-0" A-3



ROOF DETAIL 3
SCALE: 1 1/2"=1'-0" A-3

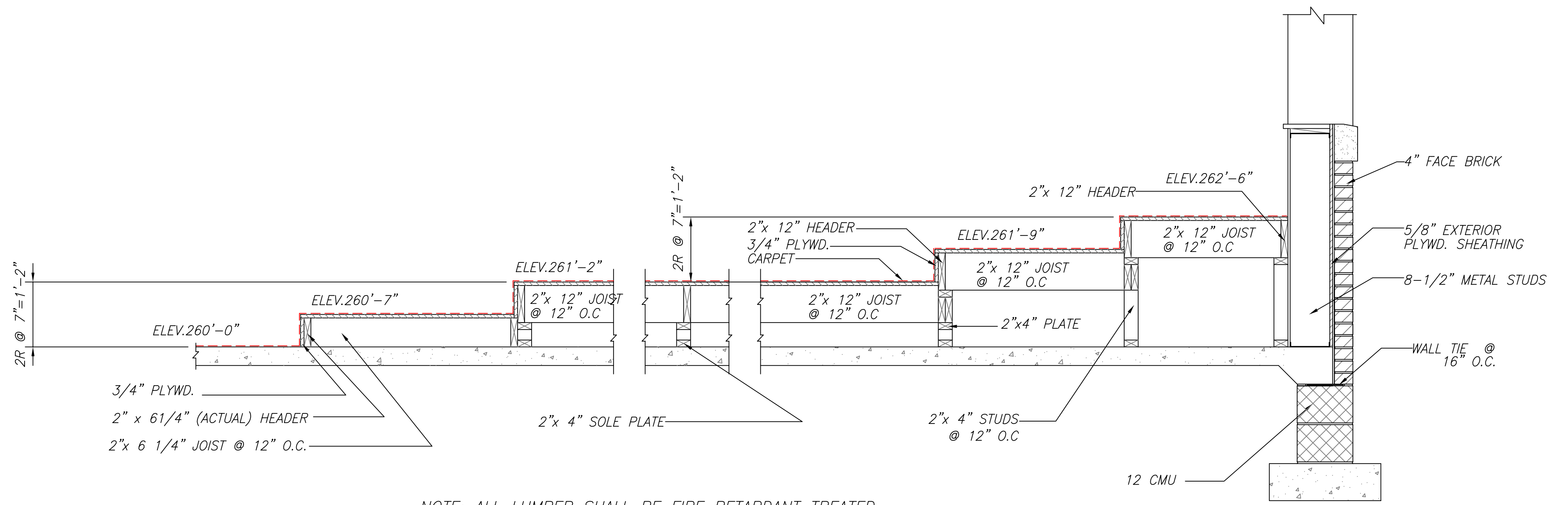


ROOF DETAIL 6
SCALE: 1 1/2"=1'-0" A-3



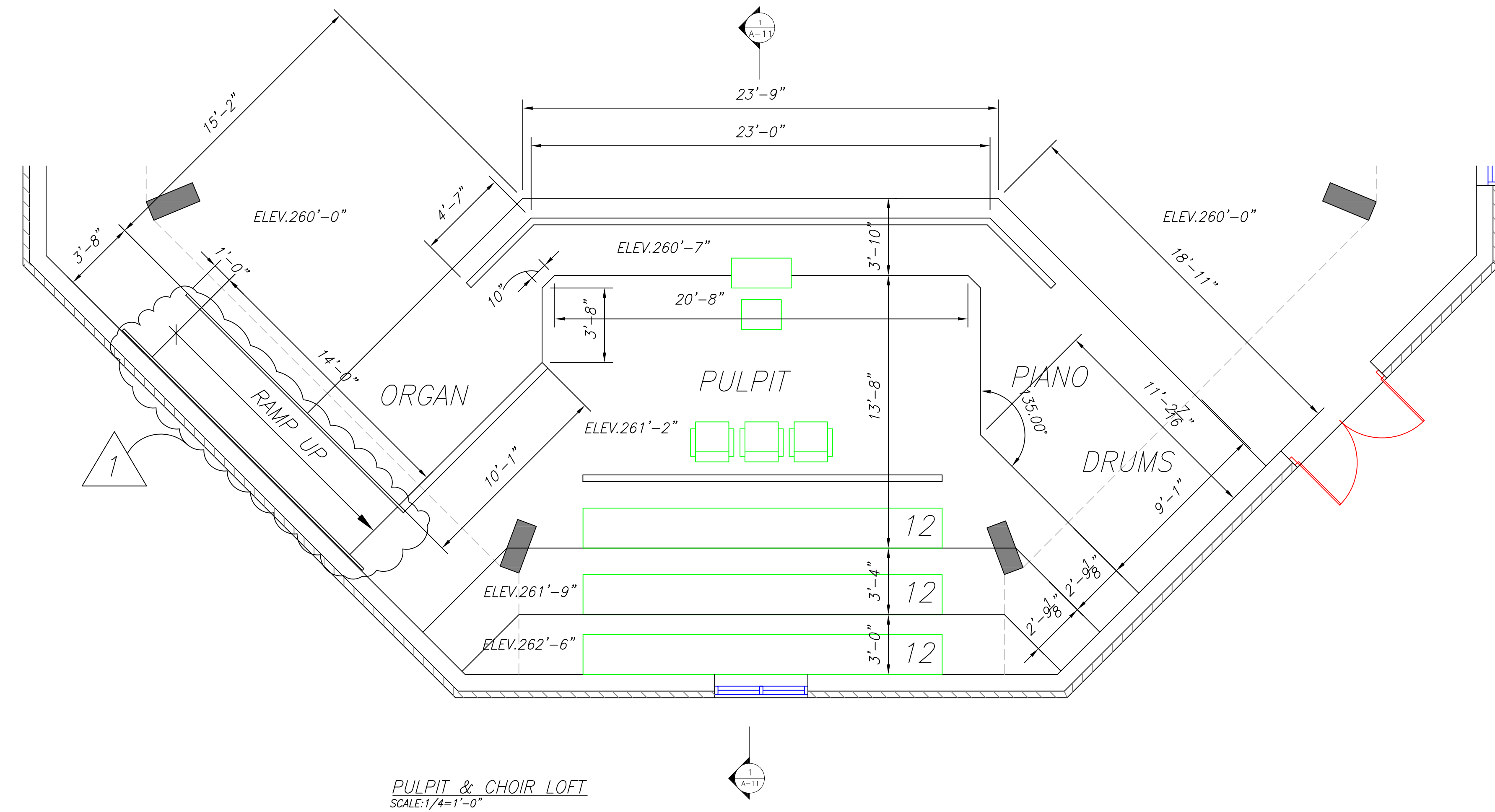
ROOF PLAN

PULPIT DETAILS
SCALE: 1 1/2"=1'-0"



NOTE: ALL LUMBER SHALL BE FIRE RETARDANT TREATED

SECTION 1
SCALE: 3/4"=1'-0" A-11



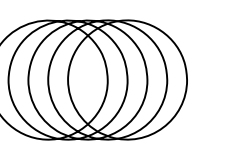
PULPIT & CHOIR LOFT
SCALE: 1/4"=1'-0"

Date:	01-14-08
Revisions:	COUNTY REVIEW COMMENTS

Consultants:
WARDER & ASSOCIATES INC.
CHURCH EXPANSION SPECIALIST
8016 OLD ALEXANDRIA FERRY ROAD
CLINTON, MARYLAND 20735
PHONE: 301-666-3900

Certification:

Project Title:
BETH SHALOM A.M.E. ZION CHURCH
2501 RICHIE ROAD
DISTRICT HEIGHTS, MARYLAND 20735
MISCELLANEOUS DETAILS



Philip Aaron Lacy, Architect
6188 Oxon Hill Road, Suite 303
Oxon Hill, Maryland 20745
Phone: 301-567-8223

Date: DEC. 1, 2005
Scale: 1/4"=1'-0"
Drawn: FCB
Checked: PAL
File No. BETH_A11

Drawing No.

A-11