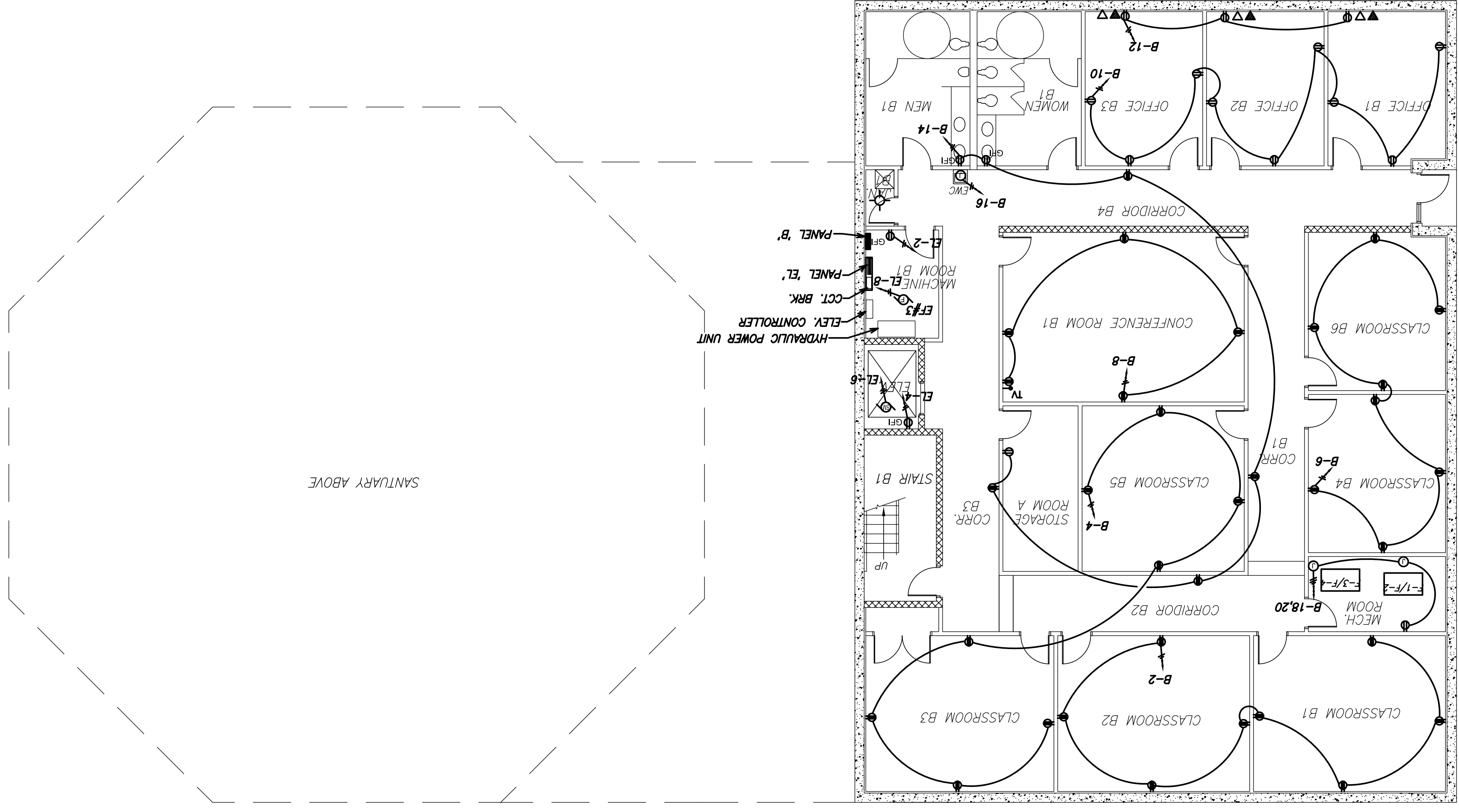


BASEMENT FLOOR PLAN - POWER & COMMUNICATION
 SCALE: 1/8"=1'-0"



- SYMBOL LEGEND**
- - DUPLEX RECEPTACLE OUTLET, NEMA 5-20R, (TAMPER PROOF), 18" A.F.F.
 - ⊙ - DUPLEX RECEPTACLE OUTLET, NEMA 5-20R, 44" A.F.F.
 - ⊙ - DUPLEX RECEPTACLE OUTLET W/GROUND FAULT INTERRUPTER.
 - ⊙ - W/HEAT-RESISTANT DUPLEX RECEPTACLE OUTLET
 - ⊙ - W/GROUND FAULT INTERRUPTER, (NEMA 5-20R)
 - ⊙ - JUNCTION BOX
 - - PANELBOARD
 - ⊙ - EXHAUST FAN CONNECTION
 - ⊙ - SUMP PUMP
 - △ - TELEPHONE OUTLET, 18" A.F.F.
 - ▲ - DATA OUTLET 18" A.F.F. PROVIDE JUNCTION BOX AND 1" CONDUIT TO CEILING SPACE. TERMINATE DROPS AT BOTH ENDS PER DC SCHOOLS TELECOMMUNICATION SPECIFICATIONS FOR WORK BY OTHERS.
 - TV - TELEVISION OUTLET
 - - BRANCH CIRCUIT HOMERUN TO PANELBOARD, NUMBER OF ARROWS INDICATES NUMBER OF CIRCUITS. FULL SLASHES INDICATE UNGROUNDED "HOT" CONDUCTORS. HALF SLASHES INDICATE GROUNDED NEUTRAL CONDUCTOR(S). DOT INDICATES EQUIPMENT GROUNDING CONDUCTOR.
 - - - BRANCH CIRCUIT WIRING CONCEALED IN WALLS OR CEILING. NO SLASHES INDICATE ONE "HOT", ONE NEUTRAL AND EQUIPMENT GROUNDING CONDUCTORS.

Drawing No.	F-2	Date:	NOV. 29, 2005
File No.	BETH_A01	Scale:	1/8"=1'-0"
Checked:	C.FORD	Drawn:	PAL
Project Title:			
BETH SHALOM A.M.E. ZION CHURCH 2501 RITCHIE ROAD DISTRICT HEIGHTS, MARYLAND 20735 BASEMENT FLOOR PLAN - POWER/COMMUNICATION			
Certification:			
Engineers:			
CHARLES FORD & ASSOCIATES CONSULTING - ENGINEERS & PLANNERS 4235 GEORGETOWN AVE., N.W. WASH., D.C. (202) 722-4190			
Revisions:			
①	PERMIT	10-3-07	
②	PERMIT	07-8-08	
A	PERMIT	11/06/08	

Philip Aaron Lacy, Architect
 4013 21st. Place
 Temple Hills, Maryland 20748
 Phone: 301-894-7979

