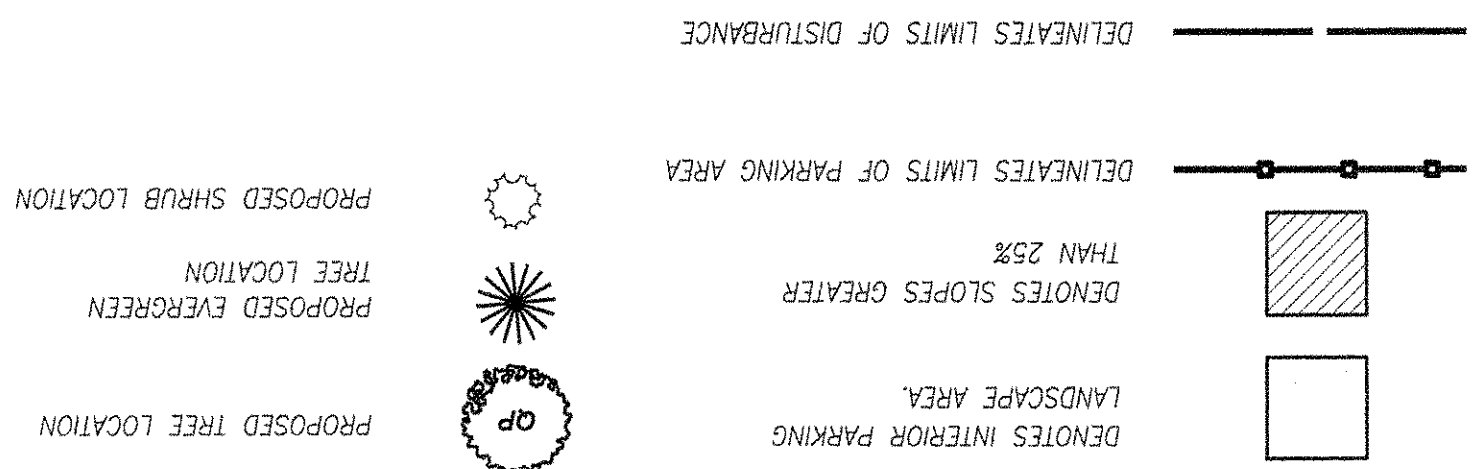


THIS SHEET FOR LANDSCAPE PURPOSES ONLY!

LEGEND



NOTES:

1. SEE LANDSCAPE DETAIL SHEET FOR TREE PLANTING AND PROTECTION DETAILS.
2. SEE LANDSCAPE DETAIL SHEET FOR TREE PLANTING NOTES AND SPECIFICATIONS.
3. AN INDUSTRIAL/COMMERCIAL LANDSCAPE STRIP, 25' WIDTH, IS REQUIRED ALONG THE WEST PROPERTY LINE [PER 4.2 LANDSCAPE MANUAL]. EXISTING VEGETATION ALONG WEST PROPERTY LINE WILL BE UTILIZED TO MEET BUFFER REQUIREMENTS.
4. SEE APPROVED TYPE II TREE CONSERVATION PLAN FOR RESTORATION/AFForestation AREAS AND PLANTING REQUIREMENTS.

COMMERCIAL LANDSCAPE STRIP PLANTINGS

AR	ACER RUBRUM/ RED SUNSET MAPLE	5	2'-1/2"	B&B
CF	CORNUS FLORIDA FLOWERING DOGWOOD	6	11/16"	B&B
	DWARF CHINESE HOLLY	76	18-24"	B&B

SOUTH BUFFER PLANTINGS

AR	ACER RUBRUM/ RED SUNSET MAPLE	4	2'-1/2"	B&B
CF	CORNUS FLORIDA FLOWERING DOGWOOD	4	11/16"	B&B
	DWARF CHINESE HOLLY	16	18-24"	B&B

NORTH BUFFER PLANTINGS

AR	ACER RUBRUM/ RED SUNSET MAPLE	5	2'-1/2"	B&B
	EASTERN WHITE PINE PINUS STROBUS/	9	6-8' HT.	B&B
CF	CORNUS FLORIDA FLOWERING DOGWOOD	4	11/16"	B&B
	DWARF CHINESE HOLLY	64	18-24"	B&B
	VINCA MINOR/ COMMON PERIWINKLE	AREA=3,300 SF		BERM GROUNDCOVER

INTERIOR LANDSCAPE PLANTINGS

AR	ACER RUBRUM/ RED SUNSET MAPLE	9	2'-1/2"	B&B
----	----------------------------------	---	---------	-----

LANDSCAPE SCHEDULE

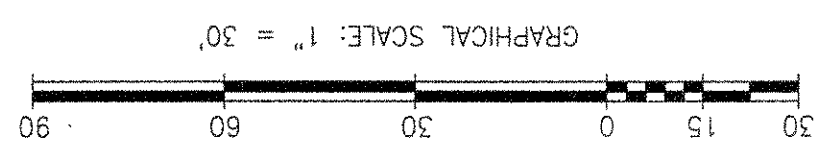
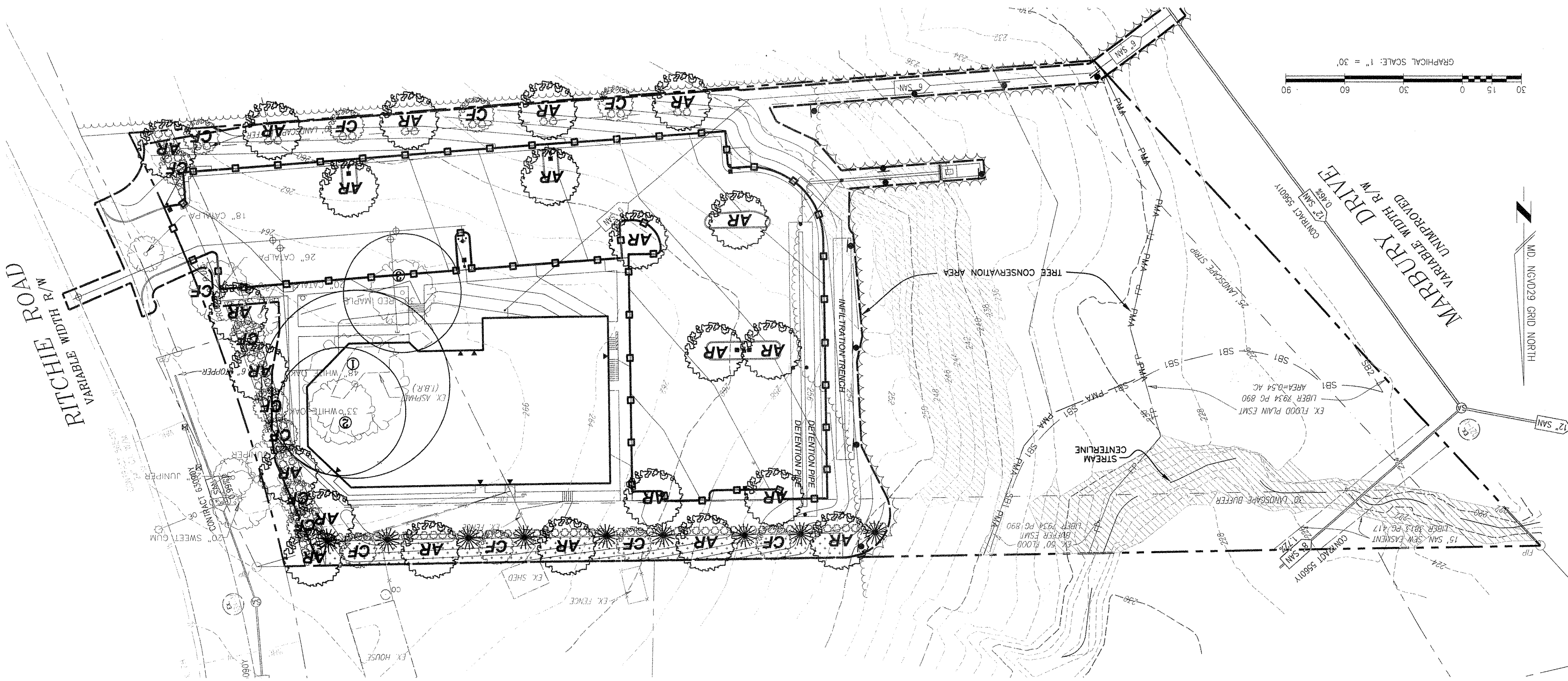
SYMBOL	BOTANICAL/ COMMON NAME	QUANT	SIZE	ROOT	REMARKS
--------	---------------------------	-------	------	------	---------

SPECIMEN TREE SCHEDULE

NO.	BOTANICAL/ COMMON NAME	LOCATION METHOD	QUANTITY	SIZE	CONDITION	PROPOSED DISPOSITION	COMMENTS
1	QUERCUS ALBA/WHITE OAK	FIELD SURVEY	1	33"	GOOD	TO BE REMOVED	
2	QUERCUS ALBA/WHITE OAK	FIELD SURVEY	1	48"	GOOD	TO BE REMOVED	
3	ACER RUBRUM/RED MAPLE	FIELD SURVEY	1	30"	GOOD	TO BE REMOVED	

CAUTION - NOTICE TO CONTRACTOR

THE CONTRACTOR IS SPECIFICALLY CAUTIONED THAT THE LOCATION AND/OR ELEVATION OF EXISTING UTILITIES AS SHOWN ON THESE PLANS IS BASED ON RECORDS OF THE VARIOUS UTILITY COMPANIES AND, WHERE POSSIBLE, MEASUREMENTS TAKEN IN THE FIELD. THE INFORMATION IS NOT TO BE RELIED ON AS BEING EXACT OR COMPLETE. THE CONTRACTOR MUST CALL EXCAVATION TO REQUEST EXACT FIELD LOCATION OF UTILITIES. IT SHALL BE THE RESPONSIBILITY OF THE CONTRACTOR TO RELOCATE ALL EXISTING UTILITIES WHICH CONFLICT WITH THE PROPOSED IMPROVEMENTS SHOWN ON THE PLANS AND TO VERIFY THE EXACT LOCATION OF ALL EXISTING UTILITIES PRIOR TO COMMENCEMENT OF CONSTRUCTION ACTIVITIES.



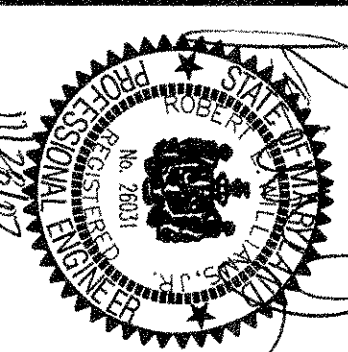
PROJECT NUMBER:	
M.N.C.P.P.C. APPROVALS	

PROJECT: **BETH SHALOM AME ZION CHURCH**
6TH ELECTION DISTRICT
PRINCE GEORGES COUNTY, MARYLAND

LANDSCAPE PLAN

SHEET 1 OF 2
FILE NO. MDPG-19D09-01

DATE: AUGUST 2007
SCALE: 1"=30'
DRAWING NAME: 19D09-1CP-REV



WE Inc.
Williams Enterprises Incorporated
18 Mosby Lane Stafford, Virginia 22556
540-286-3710 and 540-286-0345 Fax
weinc@hughes.net

WARDER
Your Church Builder
Phone: (301) 868-5900
Toll Free: (800) 732-7266
Fax: (301) 868-8740
www.wardergroup.com

REVISIONS:
