

BASEMENT / FOUNDATION LEVEL PLAN

1/8"=1'-0"

NOTES

- TOP OF SLAB ELEVATION - SEE PLAN AND ARCH. DWG.
- SLAB ON GRADE TO BE THICK MIN. REIN. 6x6-10" W/ ONE RODDED OVER 1 LAYER OF 10 MIL. POLYETHYLENE & WASHED GRABEL.
- 28 DAY COMPRESSIVE STRENGTH (F_c) FOR ALL CONCRETE SLABS SHALL BE 3000 PSI (NORMAL WEIGHT).
- DESIGN LIVE LOAD IS 100 PSF.
- (E_{max}) DENOTES BOTTOM FOOTING ELEVATION.
- TOP OF FOOTING ELEVATION TO BE 12" MIN. BELOW BOTTOM OF SOLE (UNL.S).
- FOUNDATIONS WERE DESIGNED FOR 2000 PSF BEARING CAPACITY. SEE SOIL REPORT.

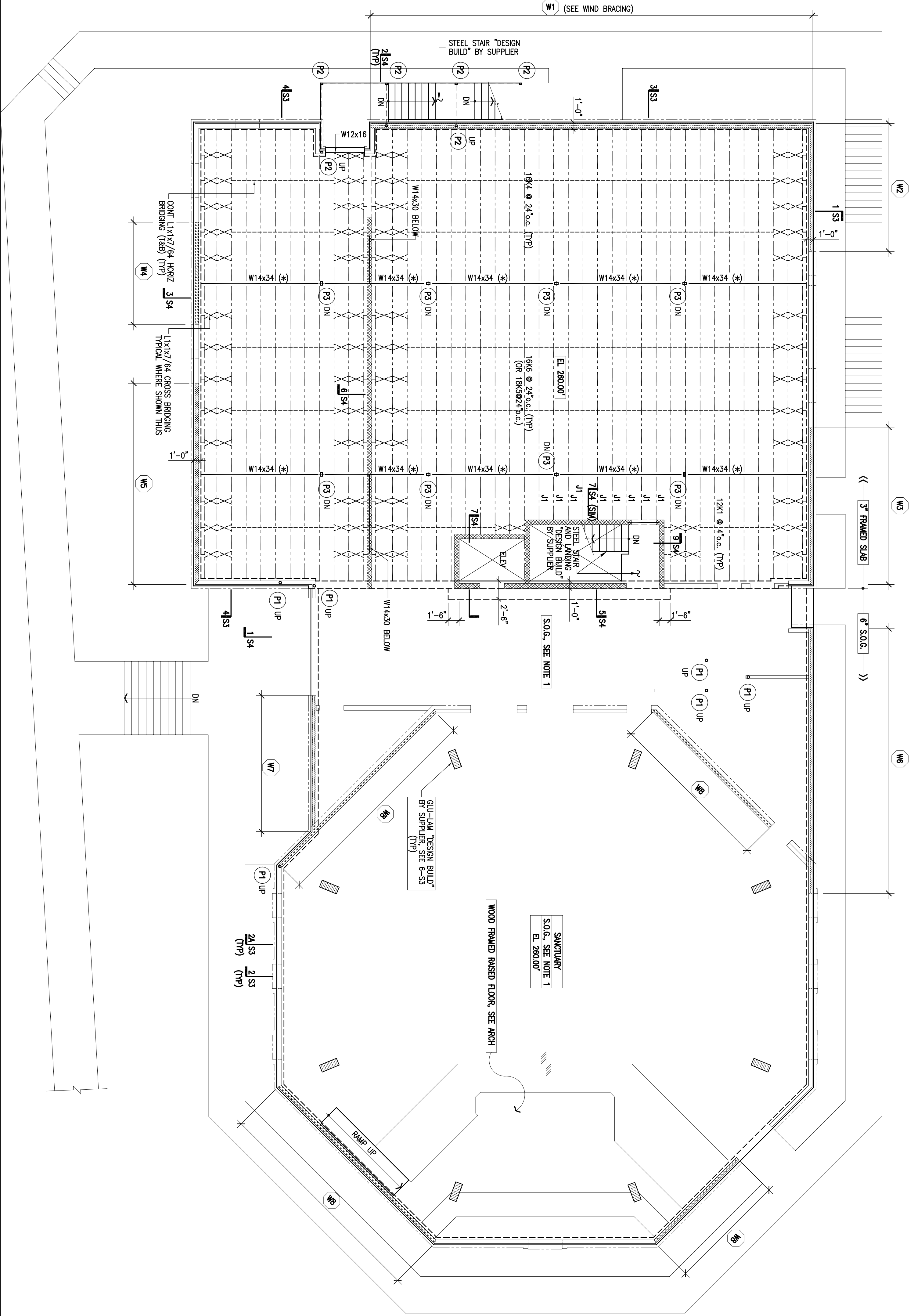
FOOTING SCHEDULE

MARK	SIZE	ROD/REIN.	REMARKS
F2	2'x12" x CONT.	3#5 CONT. 10' x 8' (8'11")	CONT. WALL FOOTING
F3	3'x3'x12"	3#5	COL. FOOTING
F6	6'x6'x14"	#6 12B8-EW	COL. FOOTING
F7	6'x6'x24"	#6 12B8-EW	COL. FOOTING

COLUMN SCHEDULE

MARK	SIZE	REMARKS
P1	HSS 4.000x0.250	ASTM500 GRADE B (F _y = 42ksi)
P2	HSS 4.3x3/8	ASTM500 GRADE B (F _y = 48ksi)
P3	HSS 6.0x4.5/16	ASTM500 GRADE B (F _y = 48ksi)

SEE SECTION B-57 FOR BASE PLATE (TYP)



1ST FLOOR FRAMING PLAN

1/8"=1'-0"

SO.C. NOTES

- 6" SLAB ON GRADE REIN. W/ #4@12" E-W, CONT. RODDED OVER 1 LAYER OF 10 MIL. POLYETHYLENE & WASHED GRABEL.
- SEE ARCH. DWGS. FOR DIMENSION NOT SHOWN.
- ALL EXTERIOR AND INTERIOR WALLS ARE TO BE 6" OR 8" LIGHT GAUGE STEEL STUDS DESIGN BUILT BY SUPPLIER. SEE SMOCKT. NOTES.
- WIND BRACING SEE 1, 2, & 3-58 AND WIND BRACING SCHED. THIS SHEET.

FRAMED SLAB NOTES

- ELEVATION TOP OF SLAB AS SHOWN ON PLAN.
- FLOOR CONSTRUCTION TO BE 2 1/2" NORMAL WEIGHT CONCRETE SLAB OVER 9/16"-28GA. STN. METAL CENTERING W/ 6x6-8/8 W.W.F. (3" TOTAL THICKNESS) W/ MIN. 3 SPAN CONDITION FOR THE DECK UNLESS NOTED OTHERWISE.
- 15k - INDICATES BEAM REACTION IN KIPS. REACTION LESS THAN 10 KIPS NOT SHOWN.
- (*) INDICATES JOIST TO HAVE BOTH CHORD SAME AS TOP CHORD & WELDED TO COLUMN.
- COORDINATES SIZE AND LOCATION OF ALL OPENINGS W/ ARCH. & MECH. DRAWINGS.
- (F1) INDICATES COLUMN AND RIGES IS EXPANDED OF FOOTING UNLESS NOTED OTHERWISE.
- GENERAL NOTE: ALL DIMENSIONS ARE TO FACE UNLESS NOTED OTHERWISE.
- MEMBERS TO BE L AND SHOWN 1/2" FROM CENTER LINE UNLESS OTHERWISE NOTED.
- WIND BRACING SEE 1/2" FROM CENTER LINE UNLESS OTHERWISE NOTED.
10. 11" DENOTE 28KSI BY WILSBART OR EQ (OR HSS 2 1/2x2 1/2x1/4)

WIND BRACING SCHEDULE

SPECIAL WALL NUMBERS	L (ft)	H (ft)
W1	60'-0"±	12
W2	17'-0"±	10
W3	21'-0"±	8
W4	14'-0"±	6
W5	27'-0"±	12
W6	36'-0"±	9
W7	18'-0"±	9
W8	SEE PLAN	9

<p>Drawing No. ST of</p>	<p>Date: NOV 21, 2005</p> <p>Scale: AS NOTED</p> <p>Drawn: AS NOTED</p> <p>Checked: AS NOTED</p> <p>File No.</p>	<p>Project Title:</p> <p>BETH SHALOM A.M.E. ZION CHURCH 2501 RITCHIE ROAD DISTRICT HEIGHTS, MARYLAND 20735</p> <p>BASEMENT / FOUNDATION PLAN AND 1ST FLOOR PLAN</p>	<p>Certification:</p>	<p>Consultants:</p> <p>Tadger Cohen Edelson Assoc. CONSULTING STRUCTURAL ENGINEERS</p> <p>1109 Spring St. Suite #510 Silver Spring MD 20910 (301) 588-1966</p>	<p>Revisions:</p>	<p>Date:</p>
	<p>Philip Aaron Lacy, Architects 6188 Oxon Hill Road, Suite 303 Oxon Hill, Maryland 20745 Phone: 301-567-8223</p>	<p>10404.3.00</p>				